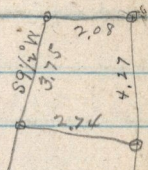


S $\frac{1}{4}$ Sec 5 T 5 N R 1 W.

R. Burch.



Copy of Deed from Robert M. Burch to Thomas Edwards
 Oct 24-1874, I 482 - Part of S. $\frac{1}{4}$ Sec 5 T 5 N. R. 1 W. Burch,
 N.E. cor N 2.08 ch S $9\frac{1}{2}$ W 3.75 ch S 78° E 2.74 ch, to Sec line N 4.27 ch
 to beg. 1.02 a.